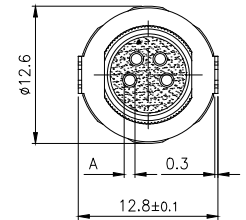
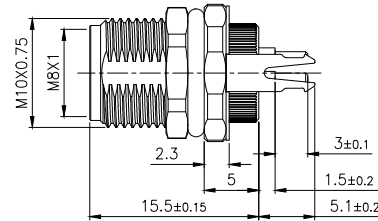
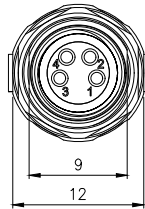


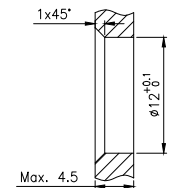
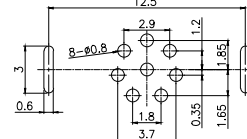
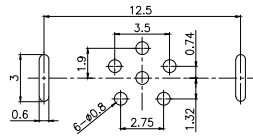
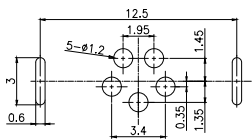
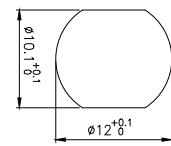
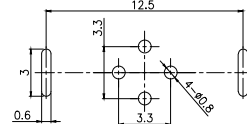
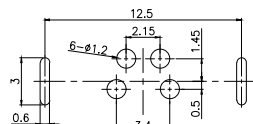
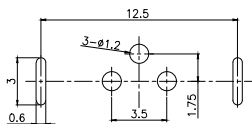
- M8 female panel mount connector ,straight ,shielded.
- Description:M8 female panel mount straight ,shielded connector , PCB type



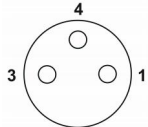
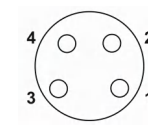
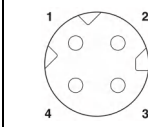
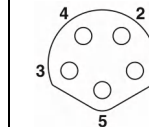
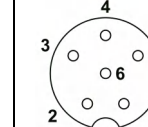
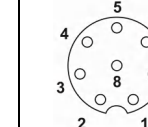
A: 2~5Pin: Ø1mm 6~8Pin: Ø0.6mm

Assembly Instruction

Drilling schemes female insert (PCB):



Technical Data

Pin No.	3	4	4	5	6	8
Coding	A	A	D	B	A	A
Pin for reference						
Type	panel mount					
Rated current	3A	3A	4A	3A	1.5A	1.5A
Rated voltage	60V	60V	60V	30V	30V	30V
Operating Temperature	-25℃~85℃					
Degree of protection	IP67/IP68					
Connector locking system	PCB					
Mechanical operation	>500 mating cycles					
Contact resistance	≤10mΩ					
Material of connector	CuZn,PA					
Contact plating	Au(gold plating)					
Filling material	Epoxy resin					

Order Information

Part No.	Moldel No.
M8- <input type="text"/> -PMP-F- <input type="text"/> -SH <div style="display: flex; justify-content: space-around; width: 100%;"> <div style="text-align: center;"> <input type="text"/> Coded </div> <div style="text-align: center;"> <input type="text"/> Pin No. </div> </div>	RG083023
Remark:Contact us any time if you have custom requirements.	